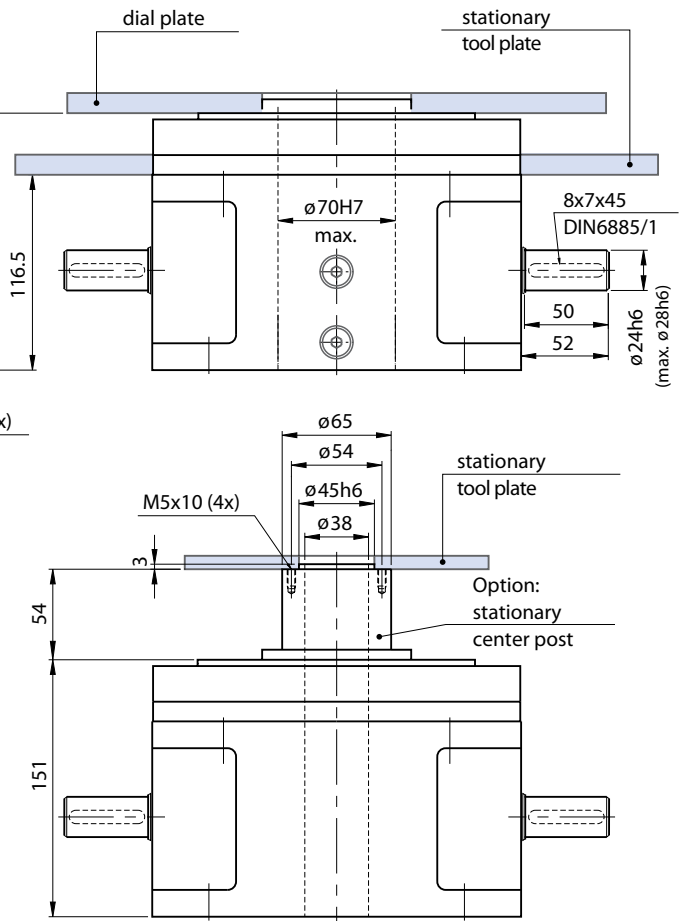
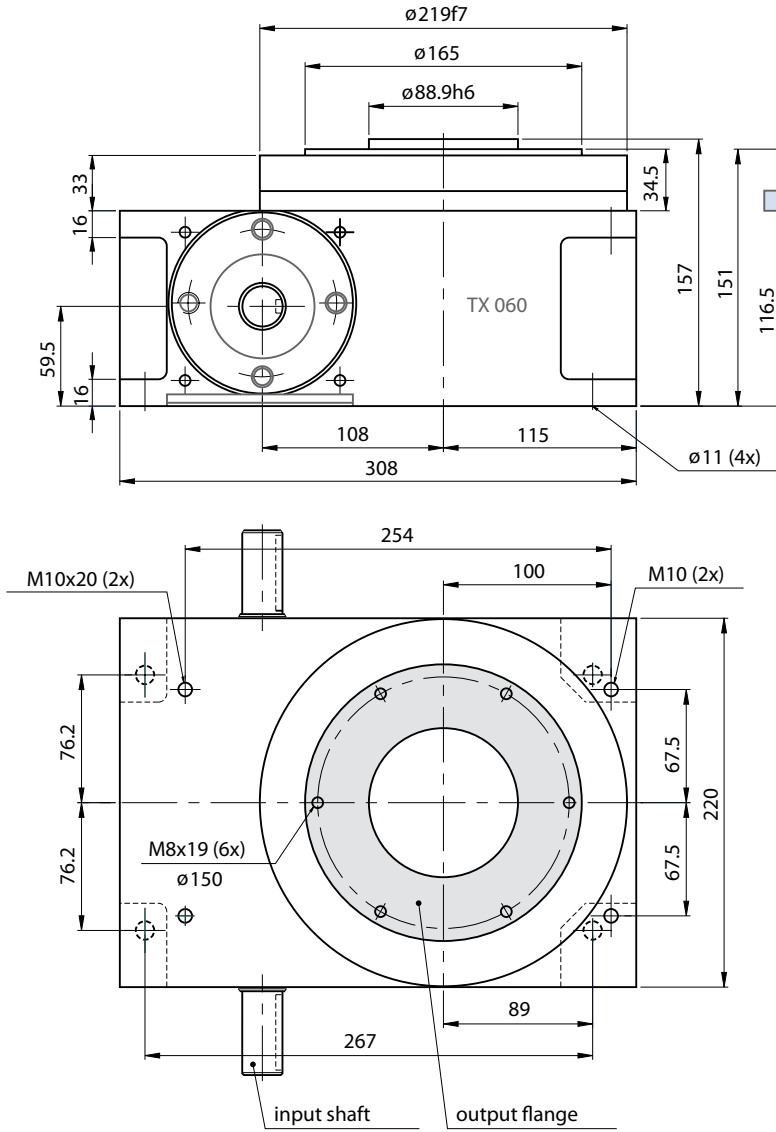


Right Angle Drives  
TX Series

# Globoidal Index Drive TX060

# Standard



- Position of input shaft and output flange in middle of dwell phase
- All tolerances according to DIN 7168-m unless otherwise stated
- Input shaft with tapped center hole according to DIN 332/2

## Load Table

number of stops Z [-]	switching angle $\phi_s$ [°]	law of motion [-]	static output torque $M_{ab\ stat}$ [Nm]	dynamic output torque $M_{ab\ dyn}$ [Nm]			applicable load m [kg] including 50% of dial plate load at pitch circle diameter [mm]								
				in t [s]			500			600			800		
				1.5	1.0	0.5	1.5	1.0	0.5	1.5	1.0	0.5	1.5	1.0	0.5
2	330	MS 50	380	364	322	262	437	172	35	258	102	21	171	67	14
3	300	MS 30	380	372	329	267	500	264	54	396	156	32	262	103	21
4	300	MS 30	380	376	333	271	500	356	72	500	211	43	353	139	28
5	270	MS 0	380	375	332	270	500	430	87	500	255	52	427	168	34
6	270	MS 0	380	378	335	272	500	500	106	500	308	63	500	203	41
8	270	MS 0	380	379	336	273	500	500	141	500	412	84	500	272	55
10	270	MS 0	380	380	336	273	500	500	177	500	500	105	500	340	69
12	270	MS 0	380	380	336	273	500	500	212	500	500	126	500	408	83
16	270	MS 0	380	379	336	273	500	500	283	500	500	167	500	500	110

