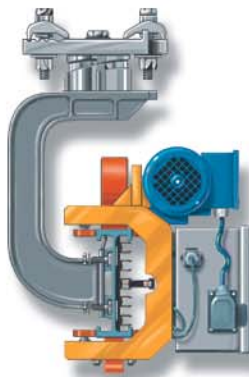


automated electrified monorail



AEM



- *Induction power rail with built-in location encoder*
- *Easy to reconfigure to suit product and process changes*
- *Up to 8800 lb (4000 kg) capacity*

This system is designed to be user friendly and easy to maintain. The components are modular in design and construction, enabling easy installation and route modification if required. Standard parts help keep necessary spares to a minimum.

The fabricated trolleys incorporate composite tyred wheels for silent operation. The aluminum rail is a symmetrical design that is available in 180 mm (C1 standard) and 240 mm profiles. Specially designed track splice clamps help to ensure precise alignment at track joints.

The AEM track profile incorporates pre-made holes every 200 mm to facilitate cable entries and enable the attachment of busbar holders (which clip into place). Cabling may also be run within the track profile section.



Features of Webb AEM

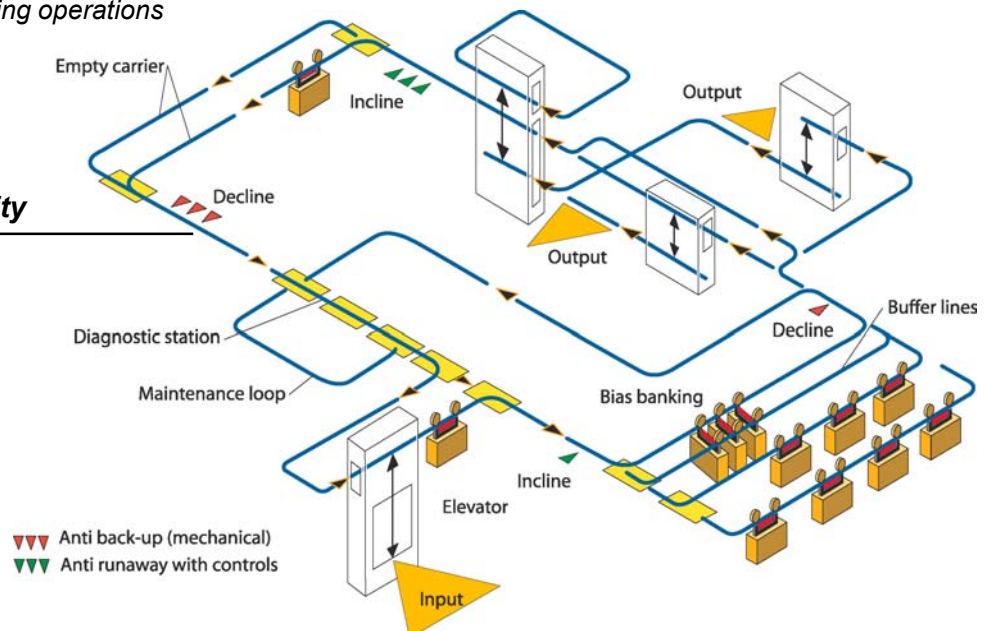
- The induction power rail has a built-in location encoder. An on-board optical sensing device continuously pinpoints the position of the AEM carriers on the track. There is no need for additional off-board slot rails or optional readers.
- Absolute encoder position to +/- 1 mm
- The integrated AEM controls eliminate the need for track sensors normally required for track switches, etc
- Up to 300 feet per minute (100m/min)
- Up to 8800 lb (4000 kg) capacity
- An innovative traction mechanism allows up to 30 degree incline/decline capability.

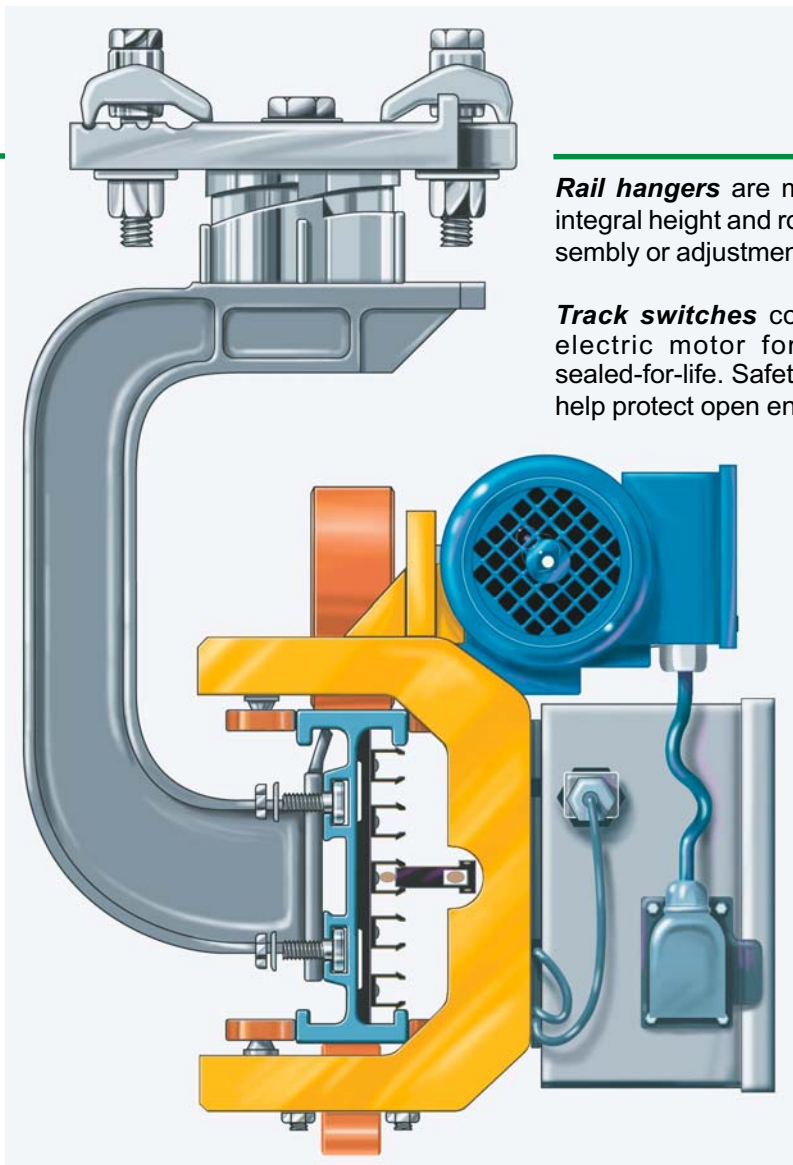
Advantages of Inductive AEM



- No busbar or collectors required
- No zoning required for function control
- Higher dependability, longer run-time and less maintenance
- Faster installation
- Clean system, no carbon dust
- Inductive track components use standard busbar clips
- Can be used in paint and finishing operations

Example of a Typical AEM Facility





Rail hangers are made of high strength cast aluminum, with both integral height and rotational adjustment... no drilling is required for assembly or adjustment.

Track switches consist of an extruded aluminum frame with an electric motor for track switch operation. All bearings are sealed-for-life. Safety plates are an integral part of the construction to help protect open ends of track.

Controls can manage trolley operation, onboard equipment and maintenance diagnostics.

Synchronous drives are also available for production line applications.

Absolute encoders can be incorporated for accurate positioning anywhere within the system.

AEM Lifts

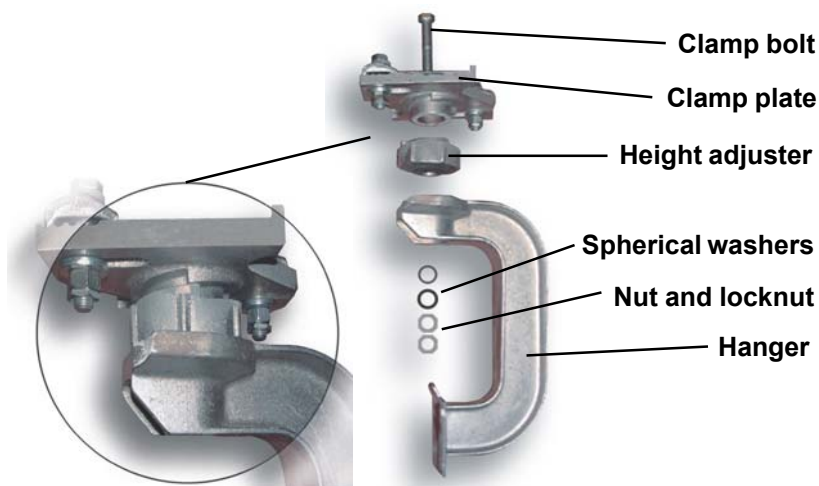


AEM lift devices utilize a dual-belt drive counterweight design that provides smooth positive lifting and lowering operations.

The AEM system also offers a dual-strand roller chain on the lift drive unit with a "standby" back-up drive.



Webb AEM Track Yoke Design



Jervis B. Webb Company

MATERIAL HANDLING SYSTEM SPECIALISTS



World Headquarters

Jervis B. Webb Company

34375 West Twelve Mile Road, Farmington Hills, MI 48331-5624 USA
Tel: 1-248-553-1220 Fax: 1-248-553-1228
www.jervisbwebb.com E-mail: info@jerviswebb.com

Engineering and Manufacturing Facilities

Jervis B. Webb Company of Georgia

560 Webb Industrial Drive, N.E.
Marietta, Georgia 30062 USA
Tel: 1-800-952-9322
Fax: 1-770-426-3919

Jervis B. Webb Company of Canada, Ltd.

1647 Burlington Street, East
POB 3428 Station "C", Hamilton,
Ontario, L8H 7M5 CANADA
Tel: 1-905-547-0411
Fax: 1-905-549-3798

Ann Arbor Computer

1201 E. Ellsworth,
Ann Arbor, MI 48108 USA
Tel: 1-734-973-7875
Fax: 1-734-973-2416

Webb Airport Services

3770 Zip Industrial Blvd., Suite B
Atlanta, GA 30354 USA
Tel: 1-404-768-1004
Fax: 1-404-769-9710

Jervis B. Webb Company, Ltd.

Safeway Wincanton, Swan Valley Way
Swan Valley, Northampton NN4 9BD
ENGLAND
Tel: +44-(0)1604 658 150
Fax: +44-(0)1604 656 246

Europa Engineering Ltd.

Goliath Works, Petre Street
Sheffield, S4 8LN ENGLAND
Tel: +44-114-244-3456
Fax: +44-114-243-1404

Jervis B. Webb GmbH

Am Herschaftsweiher 45
67071 Ludwigshafen, GERMANY
Tel: +49-(0)-6237-9773-0
Fax: +49-(0)-6237-9773-33

Pattinson Brothers Ltd.

Baker Street,
Sheffield, S9 3WG ENGLAND
Tel: +44-114-249-5060
Fax: +44-114-249-5061

Chengde-Webb Conveyors Machinery Company, Ltd.

Shuangtashan Chengde, Hebei Province
CHINA, People's Republic of
Tel: +86-314-432-0252
Fax: +86-314-4044-797

Webb-Conveyor Company of Australia Pty. Ltd.

20-22 Macquarie Drive
Thomastown, Victoria 3074
AUSTRALIA
Tel: +61-(0)3-9464-3599
Fax: +61-(0)3-9464-3699

Control Engineering Company

8212 M-119
Harbor Springs, MI 49740 USA
Tel: 1-231-347-3931
Fax: 1-231-348-7201

Webb Heavy-Duty Roller Conveyor Systems

8212 M-119
Harbor Springs, MI 49740 USA
Tel: 1-231-348-7200
Fax: 1-231-348-7201

Webb-Triax Company

215 Fifth Avenue
Chardon, OH 44024 USA
Tel: 1-440-285-4630
Fax: 1-440-285-1878

Webb Electric Company

34375 W. Twelve Mile Rd.
Farmington Hills, MI 48331 USA
Tel: 1-248-553-6935
Fax: 1-248-553-6985

Webb Forging Company

P.O. Box 400,
Carlisle, SC 29031 USA
Tel: 1-864-427-8421
Fax: 1-864-427-8425

Webb-Materials Handling Equipment

560 Webb Industrial Drive, N.E.
Marietta, GA 30062 USA
Tel: 1-800-952-9322
Fax: 1-770-426-3919

Webb India Private Ltd.

143-E, Bommasandra Industrial Area
Anekal Taluk I & II Phase
Bangalore, 562 158 INDIA
Tel: +91-80-7835132
Fax: +91-80-7835131

Sales Offices

Eastern USA

7376 State Fair Boulevard
Baldwinsville, New York USA
Tel: 1-315-635-4611
Fax: 1-315-635-8552

Pottstown, Pennsylvania USA

Tel: 1-610-287-9543
Fax: 1-610-287-9540

Canada

Hamilton, Ontario CANADA

Tel: 1-905-547-0411
Fax: 1-905-549-3798

Mississauga, Ontario CANADA

Tel: 1-905-502-5800
Fax: 1-905-502-5799

Westmount, Quebec CANADA

Tel: 1-514-481-8967

Western USA

122 Redrock Court
Folsom, CA 95630 USA
Tel: 1-916-988-3992
Fax: 1-916-988-6634

Europe

Ludwigshafen, Germany

Tel: +49-(0)-6237-9773-0
Fax: +49-(0)-6237-9773-33

Northampton, ENGLAND

TEL: +44-(0)1604 658 150
FAX: +44-(0)1604 656 246

Southern USA

6407 Idlewild Road
Suite 1.105
Charlotte, North Carolina
28212 USA
Tel: 1-800-528-9322
Fax: 1-704-535-0170

Marietta, Georgia USA

Tel: 1-800-952-9322
Fax: 1-770-426-3919

Asia Pacific

Hebei Province CHINA

Tel: +86-314-432-0252
Fax: +86-314-4044-797

Bangalore INDIA

Tel: +91-80-7835132
Fax: +91-80-7835131

Thomastown, Victoria AUSTRALIA

Tel: +61-(0)3-9464-3599
Fax: +61-(0)3-9464-3699

Midwestern USA

34375 West Twelve Mile Road
Farmington Hills, MI 48331 USA
Tel: 1-800-526-9322
Fax: 1-248-553-1261

Roselle, Illinois USA

Tel: 1-630-980-1240
Fax 1-630-980-1035

Cuyahoga Falls, Ohio USA

Tel: 1-330-920-1558
Fax: 1-330-920-1559

Russville, Indiana USA

Tel: 1-765-883-1982
Fax: 1-765-883-1984