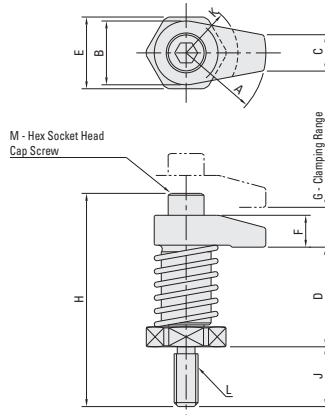


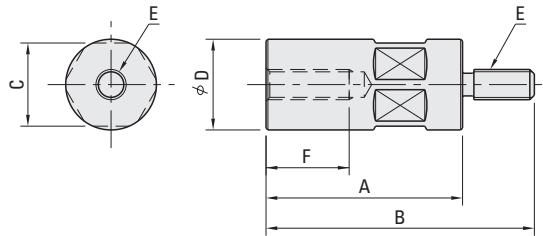
HOOK CLAMPS - TOP MOUNT



The clamps hold work pieces securely and can be swiveled out of the way for part insertion and removal. The spring lifts the clamp arm up as the clamp is released. Made from SAE-4135 alloy steel, heat treated. Precision ground with black oxide finish.

| Part # | A mm | B mm | C mm | D mm | E mm | F mm | G mm | H mm | J mm | K mm | L mm | M mm | Clamping Force Lbs | Screw Torque Ft Lbs |
|-------------|------|------|------|------|------|------|------|------|------|------|----------|---------------|--------------------|---------------------|
| BJ131-08020 | 20 | 22 | 10 | 35 | 22 | 12 | 10 | 68 | 19 | 15 | M8X1.25 | M8X1.25 X 30 | 1,775 | 14 |
| BJ131-08025 | 25 | 22 | 10 | 35 | 22 | 12 | 10 | 68 | 19 | 15 | M8X1.25 | M8X1.25 X 30 | 1,641 | 14 |
| BJ131-08030 | 30 | 22 | 10 | 35 | 22 | 12 | 10 | 68 | 19 | 20 | M8X1.25 | M8X1.25 X 30 | 1,506 | 14 |
| BJ131-08120 | 20 | 22 | 10 | 45 | 22 | 12 | 10 | 78 | 19 | 15 | M8X1.25 | M8X1.25 X 30 | 1,775 | 14 |
| BJ131-08125 | 25 | 22 | 10 | 45 | 22 | 12 | 10 | 78 | 19 | 15 | M8X1.25 | M8X1.25 X 30 | 1,641 | 14 |
| BJ131-08130 | 30 | 22 | 10 | 45 | 22 | 12 | 10 | 78 | 19 | 20 | M8X1.25 | M8X1.25 X 30 | 1,506 | 14 |
| BJ131-12040 | 40 | 32 | 18 | 50 | 36 | 16 | 15 | 107 | 30 | 25 | M12X1.75 | M12X1.75 X 45 | 3,034 | 33 |
| BJ131-12050 | 50 | 32 | 18 | 50 | 36 | 18 | 15 | 109 | 30 | 25 | M12X1.75 | M12X1.75 X 45 | 2,832 | 33 |
| BJ131-12060 | 60 | 32 | 18 | 50 | 36 | 18 | 15 | 109 | 30 | 25 | M12X1.75 | M12X1.75 X 45 | 2,630 | 33 |
| BJ131-12140 | 40 | 32 | 18 | 65 | 36 | 16 | 15 | 122 | 30 | 25 | M12X1.75 | M12X1.75 X 45 | 3,034 | 33 |
| BJ131-12150 | 50 | 32 | 18 | 65 | 36 | 18 | 15 | 124 | 30 | 25 | M12X1.75 | M12X1.75 X 45 | 2,832 | 33 |
| BJ131-12160 | 60 | 32 | 18 | 65 | 36 | 18 | 15 | 124 | 30 | 25 | M12X1.75 | M12X1.75 X 45 | 2,630 | 33 |
| BJ131-16040 | 40 | 36 | 22 | 50 | 36 | 21 | 15 | 116 | 30 | 25 | M16X2 | M16X2 X 55 | 3,012 | 44 |
| BJ131-16050 | 50 | 36 | 22 | 50 | 36 | 21 | 15 | 116 | 30 | 25 | M16X2 | M16X2 X 55 | 2,787 | 44 |
| BJ131-16060 | 60 | 36 | 22 | 50 | 36 | 21 | 15 | 116 | 30 | 25 | M16X2 | M16X2 X 55 | 2,697 | 44 |
| BJ131-16140 | 40 | 36 | 22 | 65 | 36 | 21 | 15 | 131 | 30 | 25 | M16X2 | M16X2 X 55 | 3,012 | 44 |
| BJ131-16150 | 50 | 36 | 22 | 65 | 36 | 21 | 15 | 131 | 30 | 25 | M16X2 | M16X2 X 55 | 2,787 | 44 |
| BJ131-16160 | 60 | 36 | 22 | 65 | 36 | 21 | 15 | 131 | 30 | 25 | M16X2 | M16X2 X 55 | 2,697 | 44 |

RISER CYLINDERS



Can be used with hook clamp holders shown on previous page for additional height. Made from SAE-1045 alloy steel with black oxide finish.

| Part # | A mm | B mm | C mm | D mm | E mm | F mm |
|-------------|------|------|------|------|----------|------|
| BJ600-08032 | 32 | 51 | 22 | 24 | M8X1.25 | 20 |
| BJ600-08040 | 40 | 59 | 22 | 24 | M8X1.25 | 20 |
| BJ600-08050 | 50 | 69 | 22 | 24 | M8X1.25 | 20 |
| BJ600-08065 | 65 | 84 | 22 | 24 | M8X1.25 | 20 |
| BJ600-08080 | 80 | 99 | 22 | 24 | M8X1.25 | 20 |
| BJ600-08100 | 100 | 119 | 22 | 24 | M8X1.25 | 20 |
| BJ600-12050 | 50 | 80 | 36 | 40 | M12X1.75 | 35 |
| BJ600-12065 | 65 | 95 | 36 | 40 | M12X1.75 | 35 |

| Part # | A mm | B mm | C mm | D mm | E mm | F mm |
|-------------|------|------|------|------|----------|------|
| BJ600-12080 | 80 | 110 | 36 | 40 | M12X1.75 | 35 |
| BJ600-12100 | 100 | 130 | 36 | 40 | M12X1.75 | 35 |
| BJ600-12125 | 125 | 155 | 36 | 40 | M12X1.75 | 35 |
| BJ600-16050 | 50 | 80 | 46 | 50 | M16X2 | 35 |
| BJ600-16065 | 65 | 95 | 46 | 50 | M16X2 | 35 |
| BJ600-16080 | 80 | 110 | 46 | 50 | M16X2 | 35 |
| BJ600-16100 | 100 | 130 | 46 | 50 | M16X2 | 35 |
| BJ600-16125 | 125 | 155 | 46 | 50 | M16X2 | 35 |